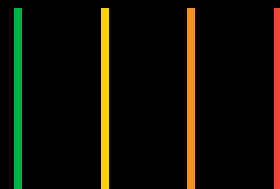




■ ■ ■ ■
Senseair
■ ■ ■ ■

Safe Start Flex
Automated Alcohol Screening




No touch


Senseair Safe Start enables alcohol screening of all safety-sensitive personnel on a daily basis. The use of contactless assessment (no mouthpiece required) allows a quick and easy process where the identification and test takes normally 9 seconds. Multiple units can be networked to allow 100% testing in very high volume settings.

Three steps


9 seconds per test



1. Scan your RFID tag or card



2. Breathe close to the inlet



3. The test result displayed on the screen

Resilience of infra-red sensor technology

Infrared (IR) sensor technology has predominantly been used for premium, desk-top alcohol sensors. For example in law enforcement for confirmation/ evidential testing, following initial roadside testing (using fuel cell sensor technology). Now the new IR technology is well suited for high volume applications as the sensor does not need to be calibrated. Today we only bring it in for cleaning and a checkup.

Access control

Examples of installation options:

- In conjunction with an access control system (“at the gate” as the employees arrive/leave the workplace)
- When accessing vehicle keys (can be integrated with advanced key cabinet solutions)
- Entering a control room or a high risk area
- Connected to an entrance barrier, for control of vehicle drivers entering a site

A safer workplace

If maximising safety is your priority, why rely on the limited deterrence of occasional random testing?

Senseair Safe Start uses a zero tolerance limit and 100% testing to promote a sober workplace.

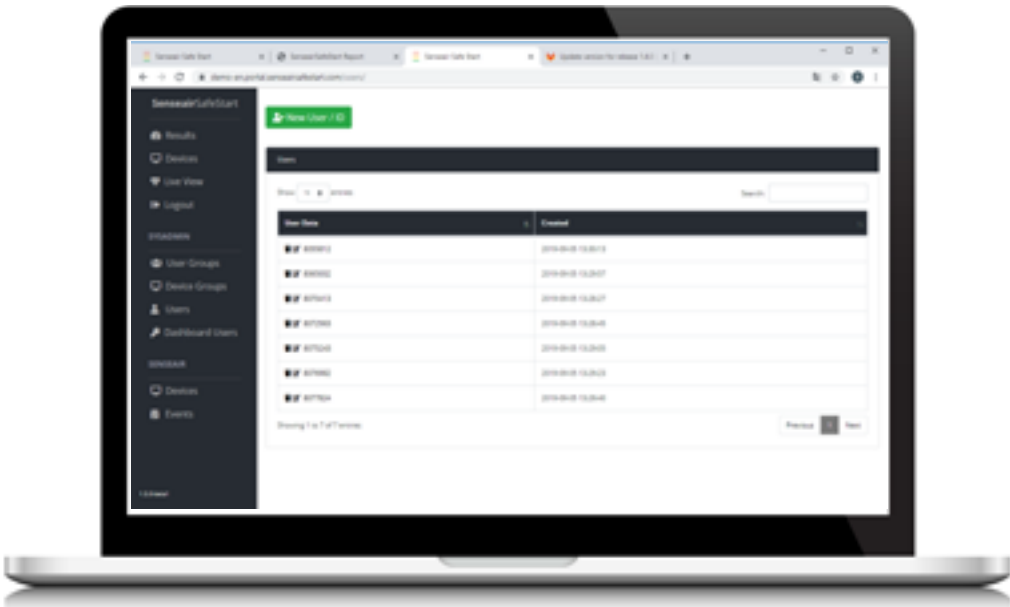
Contactless design for optimal user hygiene

The use of a tracer gas (carbon dioxide) allows accurate alcohol screening without mouthpiece. The user simply exhales towards the inlet from a distance of approximately 5 cm. An inbuilt fan ensures a constant flow of air from the front of the inlet to an exhaust outlet. This airflow also clears the sensor chamber of any residual alcohol or potential airborne contamination before each new sample.



Web based functions

All Senseair Wall units are connected in Safe Start Flex. This enables monitoring of results no matter where in the world your devices are located. Senseair Dashboard is the web-based portal that provides flexible control and administration of Safe Start Flex.



E-learning

The system is delivered with an e-learning package with the clients specific policies



Possibility to upgrade

If there is a need to check in in the vehicles and apply a safe stop to hinder a driver that is not approved you can check our offer Senseair Safe Start Fleet.

Alerts



YOU CAN TEST WITH FACE MASK ON

senseairsafestart.com

[Click here to see when the test is done with a face mask](#)



Identified usage

With Safe Start Flex it is possible to ensure that only identified users perform tests on Senseair Wall. All persons are registered via personal RFID cards or tags.



Safe Start Flex Camera

You have the option to take a sequence of photos during the test. These photographs will be included on the report that is available for all tests.



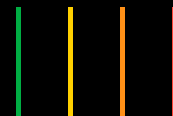
Sober check-in system

Safe Start Flex can be adapted to send information to your administrative system using specified protocols. This enables you to have automated sober check-in or other automated features relevant for your operations.

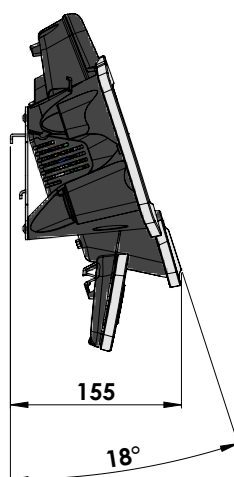
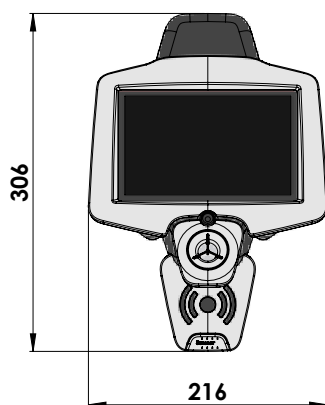
Customer value per package



	TEAM	FLEX	FLEET
High volume testing, 9 sec per test	●	●	●
100% daily screening	●	●	●
Hygienic, no mouthpiece, touchless system	●	●	●
User identification via RFID card or tag		●	●
Photos taken during tests (Senseair Wall only)		●	●
Interaction to other systems via specified protocols		●	●
Alert possibilities e-mail, text messages and Live View		●	●
Internet connection and web interface		●	●
Connected mobile units			●
Exhale one time for access to the entire fleet			●



Operating environment	
Operating temperature	+0 to +40 °C
Storage temperature	-15 to +70 °C
Area of use	Indoors up to 2000 m altitude
Installation	Wall mounted
Functional characteristics and performance	
Sensor	Infrared optical sensor
Measurement method	Contactless / Touch-free (mouthpiece-free)
Capacity	9 seconds per test
RFID-reader	MIFARE Classic & Electro Marine (EM 4102)
Network	1 x RJ45 100 Mb/s
Administrative functions	Web-based interface with the possibility to see photos
Alarm functions	Email / textmessage / Live View
Relay output	Pulsed at negative and positive test (optional). 30 V, 2A
Input signal	Pulsed 24V DC signal starts test (optional)
Dimensions	
Weight	Approx. 2.0 kg, including power supply
Dimensions	306 X 216 X 155 mm, excluding power supply
Screen Size	7 inches
Electrical	
Power supply	100-230 V, 50/60 Hz
Maximum power consumption	50W
Tests	
Selectivity	Tested according to EN 50436-2: 2012
EMC	Tested according to EN/(IEC) 61326-1:2013, Electrical equipment, control and laboratory use – EMC requirements Part, Industrial requirements.
Service	
Service interval	12 months



Features

- Fast 9 sec/test
- Contactless / Touch-free- no mouthpiece required
- Web-based interface for administration/management analysis and reporting
- Programmable real-time alerts: e-mail and text messages
- Photos taken during the test in the detailed report
- Ability to restrict use to identified users only
- Scalable capabilities
- "At the gate" verification of fitness for work = real deterrent/workplace safety
- Single annual service, irrespective of throughput
- Alcohol limit set for zero tolerance testing

Senseair AB
 Flottiljgatan 49
 SE-721 31 Västerås, Sweden
 Tel: +46 (0) 653-717770
www.senseairsafestart.com
info@senseair.com

Senseair