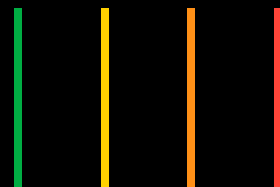




Senseair  
AsahiKASEI

Safe Start Fleet  
Automated Alcohol Screening

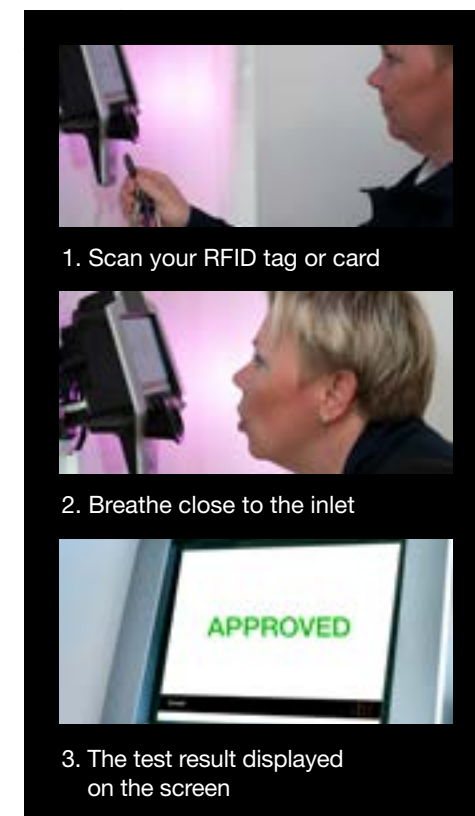


## No touch

Senseair Safe Start enables alcohol screening of all safety-sensitive personnel on a daily basis. The use of contactless assessment (no mouthpiece required) allows a quick and easy process where the identification and test takes normally 9 seconds. Multiple units can be networked to allow 100% testing in very high volume settings.

## Three steps

9 seconds per test



## Resilience of infra-red sensor technology

Infrared (IR) sensor technology has predominantly been used for premium, desk-top alcohol sensors. For example in law enforcement for confirmation/evidential testing, following initial roadside testing (using fuel cell sensor technology). Now the new IR technology is well suited for high volume applications as the sensor does not need to be calibrated. Today we only bring it in for cleaning and a checkup.

## Access control

Examples of installation options:

- In conjunction with an access control system (“at the gate” as the employees arrive/leave the workplace)
- On board vehicles with a lock function
- Entering a control room or a high risk area

## A safer workplace

If maximising safety is your priority, why rely on the limited deterrence of occasional random testing?

Senseair Safe Start uses a zero tolerance limit and 100% testing to promote a sober workplace.

## Contactless design for optimal user hygiene

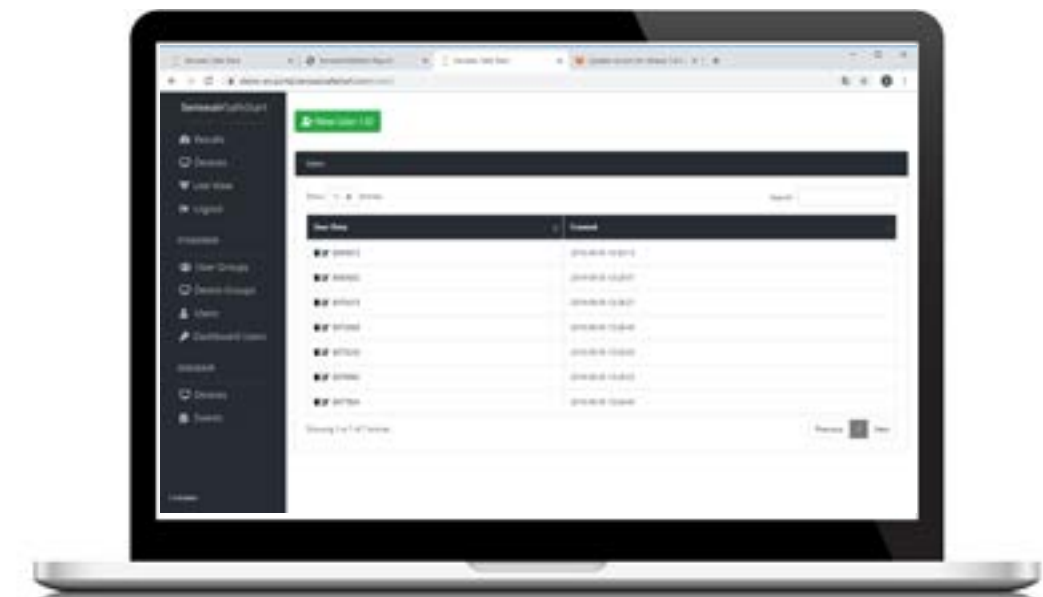
The use of a tracer gas (carbon dioxide) allows accurate alcohol screening without mouthpiece. The user simply exhales towards the inlet from a distance of approximately 5 cm. An inbuilt fan ensures a constant flow of air from the front of the inlet to an exhaust outlet. This airflow also clears the sensor chamber of any residual alcohol or potential airborne contamination before each new sample.



## Web based functions

The web-based interface provides flexible access to management and administrative functions. A dashboard tracks the number of approved/non-approved tests, total number of tests and the number of stations that are offline and not available in the system (multiple units can be networked and controlled/monitored together).

All persons are registered via personal RFID cards or tags. Historical details can be investigated and statistical reports produced. If you use the Fleet option with a lockfunction in the vehicles or some kind of “gate” this can be bypassed from the administrator but will be logged.

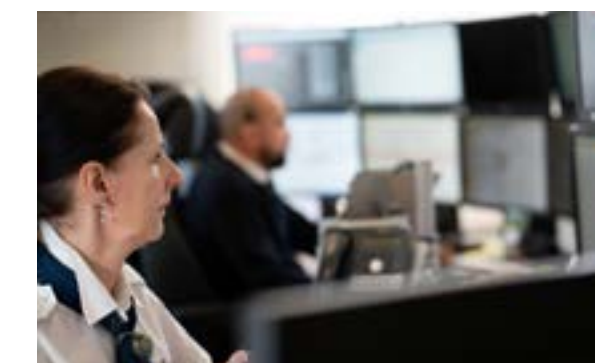


## E-learning

The system is delivered with an e-learning package with your specific policies. We will also assist or conduct on site training with your personnel.



## Alerts



Alert functions are programmable and can be sent via e-mail to preset individuals.

## Test reports



For tests indicating alcohol over the limit, detailed pdf reports can be generated.



9 seconds

The driver or service personnel can check in in the depot or on the bus, it takes 9 seconds from scanning the ID to get a go.

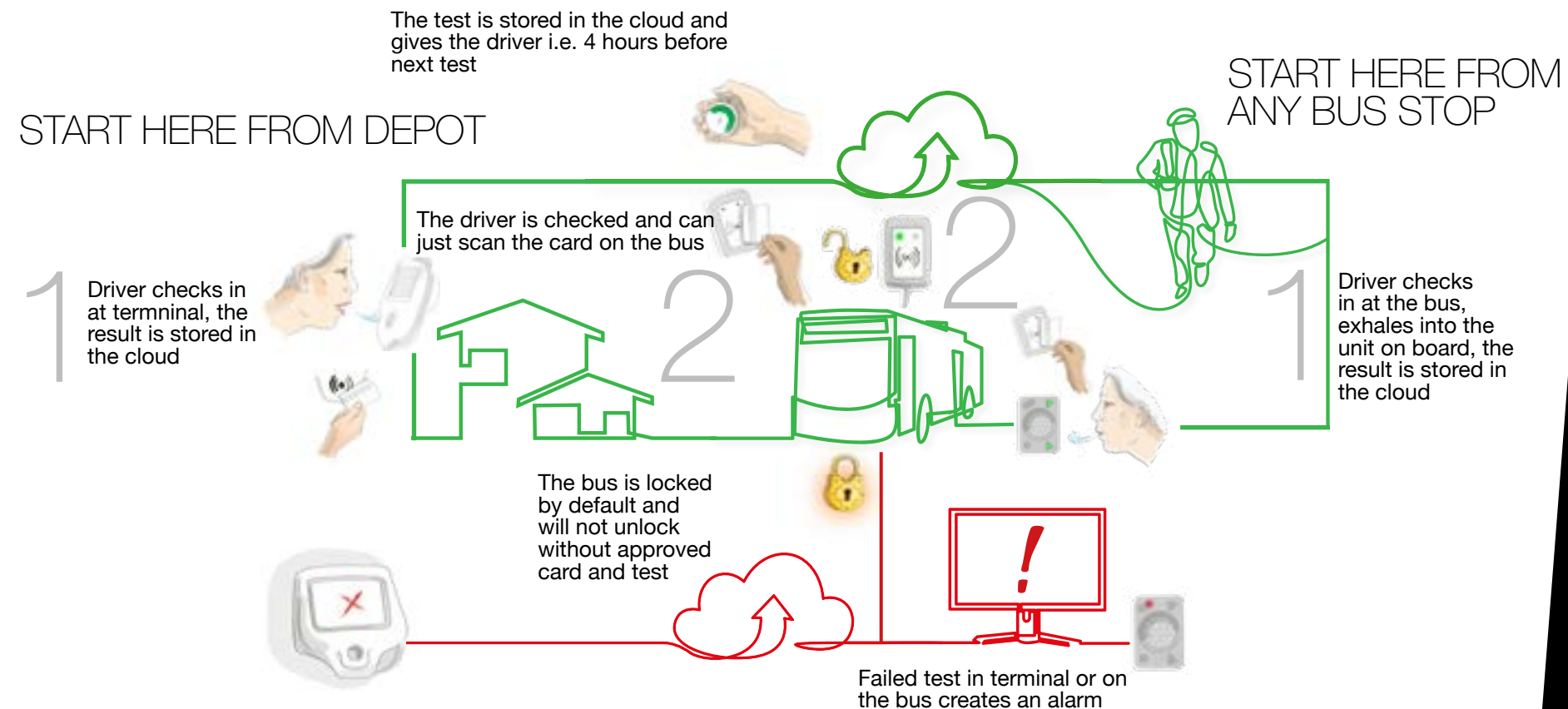
1 second

When the test is done all they have to do when they enter the (next) vehicle is scan the id and then just drive away. It takes approximately 1 second.

0,001 second

The test result is sent to the cloud and gives the driver the time you decide in your policy. We recommend between 4-5 hours. For extra safety you can apply a checkout with a breath test.

# SCANEXHALEDRIVE



Watch an education film made for one of our customers

3 features

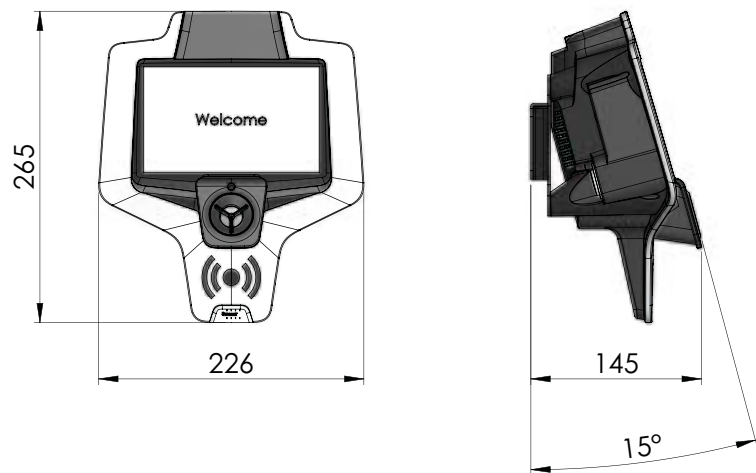
When the ID is scanned it secures that you have the right driver with the right competence and of course that the driver is in the right condition.

Business case

Upon request we can show you a couple of business cases. The reward with Safe Start compared to traditional systems is the time it saves. Changing drivers on the line takes seconds instead of minutes, it is also easy to visualize the service personnel that usually have to move hundreds of buses each night, their solution to save time is usually to leave all the engines idling...

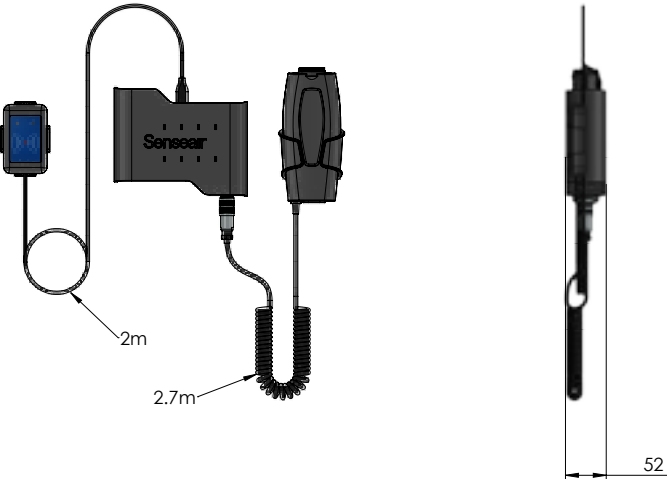
Senseair Wall

Operating environment	
Operating temperature	+0 to +40 °C
Storage temperature	-15 to +70 °C
Area of use	Indoors up to 2000 m altitude
Installation	Wall mounted
Functional characteristics and performance	
Sensor	Infrared optical sensor
Measurement method	Contactless (mouthpiece-free)
Capacity	9 seconds per test
RFID-reader	MIFARE Classic & Electro Marine (EM 4102)
Network	1 x RJ45 100 Mb/s
Administrative functions	Web-based interface
Alarm functions	Email / Live View
Relay output	Pulsed at negative test (optional)
Dimensions	
Weight	Approx. 2.0 kg, including power supply
Dimensions	265 x 226 x 145 mm, excluding power supply
Screen Size	7 inches
Electrical requirements	
Power supply	100-230 V, 50/60 Hz
Maximum power consumption	50W
Tests	
Selectivity	Tested according to EN 50436-2: 2012
EMC	Tested according to EN/(IEC) 61326-1:2013, Electrical equipment, control and laboratory use – EMC requirements Part, Industrial requirements.
Service	
Service interval	12 months



Senseair Go

Operating environment	
Operating temperature	-15 to +70 °C
Storage temperature	-15 to +70 °C
Area of use	In-vehicle up to 2000 m altitude
Installation	Vehicle mounted
Functional characteristics and performance	
Sensor	Infrared optical sensor
Measurement method	Contactless (mouthpiece-free)
Capacity	In-vehicle testing
RFID-reader	MIFARE Classic & Electro Marine (EM 4102)
Network	1 x RJ45 100 Mb/s
Administrative functions	Web-based interface
Alarm functions	Email / Live View
Relay output	Closed at negative test. Held until reset.
Dimensions	
Weight	Approx. 1.0 kg
Dimensions	170 x 137 x 41 mm resp. 75 x 170 x 35 mm
HMI	Diodes
Electrical requirements	
Power supply	12 V, DC
Power consumption	Peak 100W, steady state 10W
Tests	
Selectivity	Tested according to EN 50436-2: 2012
EMC	Tested according to EN/(IEC) 61326-1:2013, Electrical equipment, control and laboratory use – EMC requirements Part, Industrial and train requirements.
Service	
Service interval	12 months





## Features

- Fast: 9 sec/test
- Contactless - no mouthpiece required
- Web-based interface for administration/management analysis and reporting
- Programmable real-time alerts: e-mail, detailed PDF reports
- Network capabilities - including 24/7 status monitoring (# units online/offline)
- "At the gate" verification of fitness for work = real deterrent/workplace safety
- Single annual service, irrespective of throughput
- Alcohol limit set for zero tolerance testing
- Configurable Safe Time for accessing the whole fleet with one test
- Remote bypass is possible

Senseair Safe Start FLEET 1.5



Senseair AB  
Flottiljgatan 49  
SE-721 31 Västerås, Sweden  
Tel: +46 (0) 21 80 00 99  
[www.senseairsafestart.com](http://www.senseairsafestart.com)  
[info@senseair.com](mailto:info@senseair.com)

